



# THIS IS EL DORADO



## WHAT'S HAPPENING IN EL DORADO

### FIND MORE EVENTS AT WWW.ELDOKS.COM

- September 7 - Labor Day - **City Offices Closed** Check [www.eldoks.com](http://www.eldoks.com) for changes to the trash route.
  - September 8 - City Commission Meeting
  - September 21 - City Commission Meeting
  - October 5 - City Commission Meeting
- Check out one of the sites below for daily updates!



@cityofeldorado



@EldoCityMgr



@whats.happening.in.eldoks



City of El Dorado, KS

### From the Desk of the City Manager

The City of El Dorado and the El Dorado Chamber of Commerce awarded \$149,977 in COVID-19 Relief Grants to twenty local businesses. Twenty-eight businesses applied for \$521,880 in grant funds.

“COVID-19 impacted many businesses in our community in ways that were unforeseen several months ago,” says Mayor Bill Young. “By providing assistance the City can help small businesses that are essential to the fabric of our community. Small businesses provide jobs and invest in the community in ways that make El Dorado an awesome place.”

The City authorized up to \$150,000 from the City’s Economic Development Sales Tax Fund to provide the COVID Relief Program to small businesses. The one-cent sales tax, approved by voters every five years and most recently reauthorized in 2018, provided the funding source for this initiative.

A committee comprised of representatives from the City and Chamber reviewed grant applications and decided on award amounts. “The evaluation committee took into account many factors when reviewing requests for funding,” says Chamber Executive Jordan Buxton. “These factors included federal assistance the business had applied for and received, whether the business has been closed during COVID, and the business’ community footprint. In other words, it was very important for businesses to have had a track record of investing in the community.”

Businesses must have experienced business distress and revenue loss as a result of the COVID-19 pandemic, and be located within the corporate boundaries of El Dorado to be eligible to receive funds. The relief funds will assist businesses with unexpected expenses arising from the pandemic such as cleaning and sanitation supplies, general supplies or inventory that support business activity, business materials needed to support operational adjustments due to pandemic, and assistance with lease or utility payments.

The City and Chamber are excited to provide this opportunity for local businesses during the COVID-19 pandemic. A list of businesses receiving funds and the amount of each grant may be found at [www.eldoks.com](http://www.eldoks.com).

### Countdown to the 150th Celebration: The Beginning

El Dorado was laid out in the form of a city and platted by B. Frank Gordy and his associates in March, 1868, but the community continued as a settlement until 1870 when 51 petitioners, headed by D. M. Bronson, asked that the town be incorporated as a village. The Butler County probate court granted a 140-acre tract of land and the first trustees were J.C. Lambdin, A.D. Knowlton, T.B. Murdock, T.B. Boswell and C.M. Foulks. Shortly after Gordy filed his claim, Gordy sold 1/5 interest each to Henry Martin, Samuel Langdon and Bryon O. Carr. The lots were then laid out and sold. Humble homes were erected quickly and the town soon flourished. The citizens took pride in their property, and the area was known for the numerous shade trees along the streets. It was mentioned that, “El Dorado is one of the neatest towns in the state”.

In 1871, D.M. Bronson headed and presented a petition for incorporation and on September 12, 1871, El Dorado was changed from a village to be incorporated as a city of the third class. J.C. Lambdin, chairman of the village trustees, acted as mayor until the first election could be held. The citizens chose Henry Falls as our first Mayor. El Dorado was made a second class city in July of 1885 and in March 1917 the City changed from the aldermanic

**story continued on back...**



Have a public event you would like us to advertise for you?

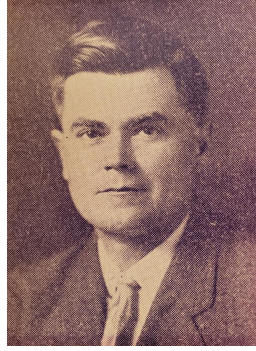
Submit your events to [cvb@eldoks.com](mailto:cvb@eldoks.com) or submit events online at [eldoks.com](http://eldoks.com) through the Community Events Calendar.



## The Beginning (cont.)

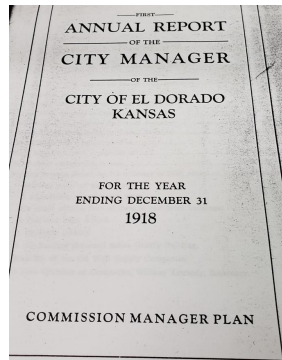
form of government to the Commission-Manager form of government, and welcomed their first City Manager, Bert C. Wells on July 1, 1917 (pictured here).

Mr. Wells came to Butler County in 1899 and lived on a farm close to Rose Hill. He attended Friends University and received his degree in 1903. Mr. Wells was the City Engineer in Wichita for 10 years prior to him becoming the City Manager in El Dorado. During his time here, he helped write the "First Annual Report of the City Manager". This document mentioned all of the new construction occurring in the City, along with financial and department updates and changes. Mr. Wells resigned in May of 1921 where he went to serve as the City Manager in Atchison until 1927 and then returned to Wichita to become the City Manager until he retired in 1939.



### Some fun facts from the "First Annual Report of the City Manager of the City of El Dorado, Kansas".

- Population (by the County Clerk) in 1915 – 2,705
- Population (City Directory) in 1918 – 17,200
- Valuation, 1915, as shown by County Assessors - \$2,923,136
- Valuation, 1918, as shown by County Assessors - \$8,995,770
- 13 miles of paved streets
- Six grade schools
- Carnegie Library
- Four Refineries, with a capacity of 20,000 barrels
- Hotel under construction to Cost \$300,000



Mooney, P. (1916) *History of Butler County Kansas*

Wells, Bert C. (1919) *First Annual Report of the City Manager of the City of El Dorado, Kansas*

## Water Towers 101

**By: Kurt Bookout, Public Utilities Department**

Have you ever turned on your faucet and found that no water came out of it? If you get your water from a municipal water system, the answer is probably "no." A big reason for that reliability is the water tower. Just like the faucet you turn on every morning to brush your teeth, most people take water towers for granted. They are an ingenious system for not only storing water, but also storing pressure.

So why do we need to store water hundreds of feet above our city? Water towers are tall to provide pressure. Each foot of height provides 0.43 PSI (pounds per square inch) of pressure. The water

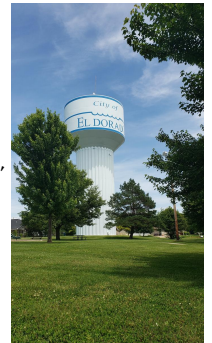
**story continued at top right...**

## Water Towers 101 (cont.)

tower must be tall enough to supply pressure to all of the homes or businesses in the area of the tower. So, a 100 foot tall water tower, when full, will provide about 43 PSI of pressure at the base. Clean, treated water is pumped up into the water tower, where it stores about a half million gallons of water, enough to fill about 25 residential swimming pools.

So how does it get there? Pumps at the El Dorado Water Treatment Facility pump water into the water distribution pipes. These pipes, about 150 miles of them in El Dorado, bring fresh, clean water to our homes and businesses, and any surplus water fills the tower. Water towers also store large quantities of water for extreme water demands, like fighting a fire. Once the water towers are full, the pump can shut off, as our community begins to wake up and start using water, the pumps start up again and the cycle continues. This cycling of water through the towers ensures that we keep the water fresh, and in the winter it helps to keep ice from forming inside of the tower. In general, water demand fluctuates throughout the day. Our highly trained water treatment operators have to keep a close eye on water use every day to ensure they are treating and pumping water as fast as our customers are using it.

We have 1.25 million gallons of elevated storage in water towers. Besides the 13,000 El Dorado citizens, we also serve seven rural water districts, covering most of Butler County, as well as a few other communities. So, this 1.25 million gallons, which sounds like a lot, is only about 4 hours of storage in the summer and about 8 hours of winter storage. It is important to have well trained Water Distribution employees who can isolate and fix leaks quickly, so that the system continues to operate and provide water as expected by our citizens and other customers.



El Dorado's oldest tower is located on 6th Street, and was built in 1926, so it is approaching 100 years of service. This 250,000 gallon tower is 128 feet tall, with a tank depth of 34 feet. The "McCullum" tower (pictured above), located near the high school, is a 500,000 gallon "fluted hydropillar" tower, which describes the type of base it sits on. This tower stands at 111 feet and has a bowl depth of 39 feet. El Dorado's newest tower, the 500,000 gallon "Industrial Park" Water Tower was built in 1990. It stands at 107 feet tall and has a tank depth of 28 feet. Incredibly, after 30 years of weathering through the extreme heat and cold of Kansas weather, this tower still has the original paint! Typically, paint on water towers lasts about 20 years, so you will likely be seeing a new coat of paint on it in the near future.

If you have any questions give us a call at 316-322-4411 or visit our website at <http://eldoks.com/130/Public-Utilities>.



## WATER QUALITY DATA

During 2019, El Dorado's Water Treatment staff and Kansas Department of Health and Environment Laboratory performed more than 30,000 tests for about 85 different contaminants. The table below lists all of the drinking water contaminants tested for during the 2019 calendar year.



## Backflow Prevention Program

Did you know, under certain conditions, you can lose water pressure and negative pressure (suction) can actually occur on water lines? A water main break or a fire truck pulling water from a hydrant, can create negative pressure causing contamination to enter your plumbing and our water mains, if not protected

by a backflow preventer. The Public Utilities Department, in accordance with State and local regulations, has implemented a Cross-Connection Backflow Prevention program to keep your water safe. This program requires backflow prevention assemblies on any connection to City water where there is a potential for contamination, including but not limited to irrigation systems, fire sprinklers, soft drink machines or boilers. You can help protect our water by making sure your outside faucets are protected with an atmospheric vacuum breaker. In most homes built after 1990, the outside faucets have built-in atmospheric vacuum breakers. But for those without, we have a limited supply of atmospheric vacuum breakers available free of charge at the Water Treatment Plant. Please contact us for more information at 322-4443.

## Lead & Copper

The interaction of treated water with water mains and household plumbing may contribute other substances, such as lead and copper, to consumers' tap water. In 2018, El Dorado completed extensive lead & copper sampling in our distribution system (at customer taps), and all results were well below MCL's (see table for results).

## More About Lead

Infants and young children are typically more vulnerable to lead in drinking water than the general population. It is possible the lead levels at your home may be higher than at other homes in the community as a result of materials used in your home's plumbing. Always use cold water to prepare food or beverages; hot water can pick up lead or other metals from your plumbing or hot water tank. Flushing the tap briefly is also a good way to eliminate lead. In all cases, our drinking water tests have shown that flushing the tap for 30 seconds reduces any lead that may be present far below any level of concern. Additional information is available from the EPA Safe Drinking Water Hotline at 1-800-426-4791.

## Need More Information?

Water quality and safety are increasingly complex and the information in this brief summary may not answer all of your questions. For more information about this report or other water quality issues or concerns, please call Kurt Bookout at (316) 322-4411 or Brett Perry at 322-4441.

## En Español

Este informe contiene informacion muy importante sobre su agua beber. Traduzcalo o hable con alguien que lo entienda bien.

## Free Copies of This Report

Extra copies can be picked up at City Hall.

### What does this table mean?

Last year, as in years past, your tap water met or surpassed all EPA and Kansas health standards for drinking water.

### Terms, Abbreviations, and Symbols

#### Used in This Report:

Some of the terms, abbreviations and symbols contained in this report are unique to the water industry and may not be familiar to all consumers. Terms used in the table are explained below:

ppm – parts per million, or milligrams per liter (mg/L)

ppb – parts per billion, or micrograms per liter (ug/L)

picoCuries per liter (pCi/L) – a picoCurie is a measure of radioactivity in water and equals one trillionth of a Curie.

Action Level (AL) – the concentration of a contaminant, which if exceeded, triggers treatment or other requirements a water system must follow.

Treatment Technique (TT) – A required process intended to reduce the level of a contaminant in drinking water.

Maximum Contaminant Level Goal – The "Goal" (MCLG) is the level of a contaminant in drinking water below which there is no known or expected risk to health. MCLGs allow for a margin of safety.

Maximum Contaminant Level (MCL) – The MCL is the highest level of a contaminant that is allowed in drinking water. MCLs are set as close to the MCLGs as feasible using the best available treatment technology.

Secondary Maximum Contaminant Level (SMCL) – SMCLs are non-enforceable, recommended limits for substances that affect the taste, odor, color, or other aesthetic qualities of drinking water, rather than posing a health risk.

Maximum Residual Disinfectant Level (MRDL) – The highest level of a disinfectant allowed in drinking water. There is convincing evidence that addition of a disinfectant is necessary for control of microbial contaminants.

Maximum Residual Disinfectant Level Goal (MRDLG) – The level of a drinking water disinfectant below which there is no known or expected risk to health. MRDLGs do not reflect the benefits of the use of disinfectants to control microbial contaminants.

NTU/Turbidity – Turbidity is a measure of the cloudiness of the water, which is caused by particles of matter. Organic and inorganic matter, silt, algae or other tiny organisms can contribute to the level of turbidity. Turbidity is measured with an instrument called a turbidimeter, which shines a beam of light through water, measuring the amount of light that is scattered by suspended material. It is measured in "Nephelometric Turbidity Units," or NTUs. Although turbidity has no health effects, it is regulated because it serves as an indicator of treatment plant performance.

90<sup>th</sup> Percentile – In a ranking of the 10 samples with the highest level of contaminant, the ninth highest sample is the value that represents the 90<sup>th</sup> percentile.

Waiver – State permission not to test for a specific contaminant.

RAA – Running Annual Average

## 2019 Secondary Constituents

Most of the questions we receive from our customers deal with characteristics or substances that are not regulated in drinking water. These properties affect the way we use water, or the way it looks, tastes, or smells. "Secondary" constituents include non-toxic metals and salts and properties that may impact the treatment and distribution system, or affect public acceptance of drinking water. There are no MCLs for these materials; instead, the EPA has established "Secondary Maximum Contaminant Levels" (SMCLs), which are non-enforceable recommended limits based on qualities such as taste, odor, and appearance. Some secondary substances, such as hardness and calcium, affect how much soap we need to use, or contribute to the formation of scale in plumbing or films on surfaces.

Constituent	Units	Recommended Limit (SMCL)	Range in Distribution System (Min.-Max.)
<b>Secondary Constituents</b>		<b>SMCL</b>	<b>(Min.-Max.)</b>
pH	Std. Units	8.5	7.6-8.5
Sodium	ppm	100	7-12
Aluminum	ppm	.05	.056-.110
Sulfate	ppm	250	4-12
Total Phosphorus (P)	ppm	5	<.025-.15
Silica	ppm	50	1.2-8.1
Zinc	ppm	5	.005-.025
Chloride	ppm	250	7.5-14
Total Dissolved Solids	ppm	500	120-160
Alkalinity (Total)	ppm	300	90-140
Hardness, Total (as CaCO <sub>3</sub> )	ppm	<50 = soft, >150 = hard	90-130
	grains	<3 = soft, >8.8 = hard	5.3-7.6
Calcium	ppm	200	25-41
Magnesium	ppm	150	4.0-7.0
Potassium	ppm	100	2.0-4.0
Specific Conductivity	umhos/cm	1500	210-310
Iron	ppm	.3	<.010
Manganese	ppm	.05	<.001
Nickel	ppm	.1	<.001

## REGULATED CONTAMINANTS REPORT: WHAT'S IN EL DORADO'S WATER?

Contaminant	CCR Units	EPA Goal (MCLG)	Highest Level Allowed (MCL)	Level Detected for Compliance	MCL Violation	Sample Date/Frequency	Likely Source of Substances
<b>Regulated leaving the Treatment Facility</b>							
Turbidity	NTU <u>Turbidity of Water</u>	N/A	TT=95% of monthly samples must be less than 0.5 NTU	0.15 100% of samples were in compliance. Range .029-.075	NO	Every 4 hours Continuous	Soil run-off, sediments and other particles present in untreated surface water.
Barium	ppm	2	2	0.068	NO	YEARLY	Erosion of natural deposits. Discharge of drilling wastes.
Fluoride	ppm	4	4	.26	NO	QUARTERLY	Water additive to promote strong teeth; erosion of natural deposits.
Arsenic	ppb	N/A	10	1.2	NO	YEARLY	Erosion of natural deposits; run off from orchards.
Mercury (Inorganic)	ppb	2	2	<0.5	NO	YEARLY	Geological and manufacturing of paint, paper, & fungicides.
Selenium	ppb	50	50	<1.0	NO	YEARLY	Discharge from petroleum or metal refineries; erosion of natural deposits.
Nitrate, as Nitrogen	ppm	10	10	.34	NO	YEARLY	Runoff from fertilizer use; leaching from septic tanks; sewage; erosion of natural deposits.
Benzene	ppb	0	5	<0.5	NO	Study every 3 years Last 2017 Next 2020	Discharge from factories; leaching from gas storage tanks and landfills.
Chromium	ppb	100	100	<1.0	NO	YEARLY	Discharge from steel and pulp mills.
Ethylbenzene	ppb	700	700	<0.5	NO	Study every 3 years Last 2017 Next 2020	Discharge from petroleum refineries.
Styrene	ppb	100	100	<0.5	NO	Study every 3 years Last 2017 Next 2020	Discharge from rubber and plastic factories; leaching from landfills.
Gross-Alpha emitters	pCi/L	0	15	<3.0	NO	Study every 3 years Last 2017 Next 2020	Erosion of natural deposits.
Combined Radium 226 & 228	pCi/L	0	5	0.9	NO	Study every 3 years Last 2017 Next 2020	Decay of natural and man-made deposits.
Xylenes	ppb	10	10	<1.0	NO	Study every 3 years Last 2017 Next 2020	Discharge from petroleum factories, discharge from chemical factories.
Toluene	ppb	1	1	<0.5	NO	Study every 3 years Last 2017 Next 2020	Discharge from petroleum factories.
<b>Regulated in the Distribution System<sup>1</sup></b>							
Total Trihalomethanes (TTHM's)	ppb	0	80	21.97	NO	Quarterly/RAA	By product of Chlorine disinfection of drinking water.
Haloacetic Acids (HAA5's)	ppb	0	60	33.48	NO	Quarterly/RAA	
TOC (Total Organic Carbon)	ppm	N/A	TT Removal Ratio >1	.91	YES	RAA 2019	Naturally present in the environment.
Total Chlorine (chloramine)	ppm	4.0 [MRDLG]	4.0 [MRDL]	3.172	NO	15 per month	Drinking water disinfectant.
<b>Regulated at the Consumer's Tap<sup>2</sup></b>							
Data from 2018 Lead and Copper Study Next study scheduled for summer 2021			Action Level (AL)	90th percentile value	MCL Violation?	Sample Date/Frequency	Likely Source of Substances.
Lead	ppb	0	AL=15	6.1	NO	Aug. - Sept. 2018	Lead and copper in plumbing and plumbing fixtures.
Copper	ppm	0	AL=1.3	0.260	NO	Study every 3 years	

1. TTHM's, HAA5's and TOC's are regulated as a running annual average, by quarter, not a single value.

2. The Action Levels for Lead and Copper are set at the 90th percentile of all samples collected; 90% of the samples must be below the Action Level.



EL DORADO

# WATER

## Where does our water come from?

The City of El Dorado diverts water from El Dorado Reservoir. El Dorado Reservoir is an 8400-acre lake with a storage capacity of over 50 billion gallons. This amount of storage should allow the City to draw 22 million gallons per day in what is classified as a 50-year drought. Water from the lake is gravity fed through large mains to the water treatment plant.

## Why does El Dorado have great tasting water?

To have great tasting water it certainly helps to have great source water. The drainage basin above El Dorado is mainly grasslands and rainwater runoff comprises most of the water entering the Lake. Because of these factors, the water is relatively soft (low mineral content) and the clarity is also very good. Annual turbidity averages fluctuate with rainfall, but usually are below 20 NTU's and sometimes as low as 2.5 NTU's. Some Kansas cities deal with turbidities in river water exceeding 1000 NTU's.

## What causes taste and odor problems in Surface Water?

Geosmin, an earthy/musty tasting compound, is produced as a metabolic by-product of some forms of algae in the water. Algae grow faster in warmer weather and therefore, Geosmin can be produced in the early summer months until the Fall. The presence of Geosmin in drinking water does not represent a health problem, but is an aesthetic concern. Unusual wind conditions, warm temperatures and the lack of precipitation can cause algae blooms in the lake. We are able to prevent most taste and odor problems from reaching the customer by watching for these episodes and treating accordingly.

## How is our water treated?

Although El Dorado's source water is of very high quality, extensive treatment is still needed to meet strict quality standards for drinking water. First, raw water is disinfected with chlorine to inactivate bacteria and viruses and to help prevent harmful organisms from growing in the distribution system. Chemicals are then added to remove particles, microorganisms and other contaminants. Another aid in achieving great tasting water is the addition of Sodium Permanganate (NaMnO4), which oxidizes many of the impurities associated with any surface water. After oxidizing these taste and odor compounds, the NaMnO4 is removed in large settling basins and filter beds along with remaining particles, yielding clean, fresh water. El Dorado Certified Water Treatment Operators monitor the treatment process continuously to ensure consistent quality and safety.

## What is Atrazine? How does it get into water? How do you know if herbicides are a problem in our drinking water?

Atrazine is a widely used herbicide used to control weeds in the production of corn and sorghum. Atrazine and other herbicides are applied before and after planting, and are also used in urban areas to control weeds along railways. Samples collected in June and November were 0.49 ppb and 0.39 ppb respectively, well below the 3.0 ppb MCL. El Dorado will sample quarterly until the values fall below 0.30 ppb for the running annual average. The increase in Atrazine levels can be attributed to the record rainfall in 2019.

## Drinking water contaminant sources and health information

Contaminants may be introduced into any drinking water before and after treatment, and may be natural or man-made.

**Source Water.** The sources of drinking water (both tap water and bottled water) include rivers, lakes, streams, ponds, reservoirs, springs and wells. As water travels over the land surface or through the ground, it dissolves naturally occurring minerals and, in some cases, radioactive material, and can pick up substances resulting from the presence of animals or from human activity. Contaminants that may be present in untreated source water include:

- Microbial contaminants, such as viruses and bacteria, which may come from sewage treatment plants, septic systems, agriculture, livestock operations, and wildlife.
- Inorganic contaminants, such as salts and metals, which can be naturally-occurring or result from urban stormwater runoff, industrial or domestic wastewater discharges, oil and gas production, mining, or farming.
- Pesticides and herbicides, which may come from sources such as agriculture, urban stormwater runoff, and residential uses.
- Organic chemical contaminants, including synthetic and volatile organic chemicals are by-products of industrial processes, petroleum production, gas stations, urban stormwater runoff, and septic systems.
- Radioactive contaminants, which can be naturally-occurring or result from oil and gas production and mining activities.

In order to insure that the tap water is safe to drink, EPA prescribes regulations which limit the amount of certain contaminants in water provided by public water systems. The Food and Drug Administration

regulations establish limits for contaminants in bottled water, which must provide the same protection for public health. These limits, called Maximum Contaminant Levels (MCLs), are set at very strict levels, as close as feasible to the level at which there are no known health risks for the general population. The Regulated Contaminants table in this report compares the highest contaminant levels detected in El Dorado's water with the MCLs.

## Special Health Concerns

Some people may be more vulnerable to contaminants in drinking water than the general population. Immuno-compromised persons, such as persons with cancer undergoing chemotherapy, persons who have undergone organ transplants, people with HIV/AIDS or other immune system disorders, some elderly, and infants can be particularly at risk from infections. These people should seek advice about drinking water from their health care providers. For information about contaminants and potential health effects, or to receive a copy of the U.S. Environmental Protection Agency (EPA) and the U.S. Centers for Disease Control (CDC) guidelines on appropriate means to lessen the risk of infection by Cryptosporidium, Giardia, and microbiological contaminants, call the EPA Safe Drinking Water Hotline at 1-800-426-4791.

## Source Water Protection — El Dorado Lake Ecosystem

**Restoration Project** The City of El Dorado, Corps of Engineers, Kansas Department of Wildlife, Parks, and Tourism, Kansas Water Office and the Butler County Conservation District have joined forces to put together a plan to protect and extend the life of El Dorado Lake. The useful life span of a lake is largely dependent upon the rate in which it fills with sediment. Sediment basically comes from two sources. Rainfall runoff carries soil particles from cropland, rangeland and from the banks of creeks, into the lake where it settles on the bottom. The other source is from wave action caused by strong Kansas winds. Waves pound the shorelines, causing the banks to erode and slough off into the lake. Best Management Practices (BMP's) can be implemented on farms and ranches at little or no cost to the landowner. BMP's are any practices that increase the water quality of runoff into the tributaries of El Dorado Lake, such as terracing, grass buffer strips, fencing cattle out of timber, providing alternative water sources such as windmills, etc. BMP's are a benefit to the landowner, because it allows them to retain valuable soil on their operation.

## Help Keep Our Streams Clean

The City of El Dorado is concerned about water quality in Kansas streams and encourages everyone to do their part to reduce the amount of pollution entering stormwater drains. Remember, anything you dump on your driveway, curb or street, drains directly into the Walnut River.



# 2020

Welcome to the City of El Dorado's 2020 Water Quality Report, our annual report card describing how your drinking water measures up against Environmental Protection Agency (EPA) and Kansas safety standards. El Dorado's water supply, treatment, and delivery professionals are committed to providing you with drinking water that is safe, pleasing, dependable and economical. We believe that informed customers are our best allies, and we are dedicated to giving you the information you need to make knowledgeable decisions about your drinking water. In addition to summarizing water quality data collected from January 1 to December 31, 2019, this brochure was developed to inform consumers about their drinking water source and quality; regulations that protect health; where customers can go for more information; programs that protect the high quality of our water supply sources; and treatment processes that assure our drinking water meets or surpasses all Federal and State standards.



## What's *Not* in El Dorado's water?

In addition to the contaminants reported in the table, El Dorado tested its drinking water for the substances listed below during 2017. No detectable levels of these substances were present.

### Metals

Antimony  
Beryllium  
Cadmium  
Chromium  
Thallium  
Silver

### Pesticides & PCB's

Alachlor  
Aldrin  
Butachlor  
Carbofuran (Furadan)  
Chlordane  
Dieldrin  
Endrin  
gamma-BHC (Lindane)  
Heptachlor  
Heptachlor Epoxide  
Hexachlorobenzene  
Hexachlorocyclopentadiene  
Methoxychlor  
Metolachlor (Dual)  
Metribuzin (Sencor)  
PCB-1016  
PCB-1221  
PCB-1232  
PCB-1242  
PCB-1248  
PCB-1254  
PCB-1260  
Propachlor (Ramrod)  
Simazine  
Toxaphene

### Microbial Contaminants

Coliform bacteria  
E. Coli  
Cryptosporidium  
Giardia

### Regulated Volatile Organic Compounds- VOCs

1,1-Dichloroethylene  
1,1,1-Trichloroethane  
1,1,2-Trichloroethane  
1,2-Dibromo-3-chloropropane  
1,2-Dichlorobenzene  
1,2-Dichloroethane  
1,2-Dichloropropane  
1,2,4-Trichlorobenzene  
1,4-Dichlorobenzene  
Benzene  
Chlorobenzene  
cis 1,2-Dichloroethylene  
Ethylbenzene  
Ethylene Dibromide (EDB)  
Methyl tert-butyl ether  
Styrene  
Tetrachloroethylene (PCE)  
Tetrachloromethane  
Toluene  
Trans 1,2-Dichloroethylene  
Trichloroethylene (TCE)  
Vinyl Chloride  
Xylenes (Total)

**Cryptosporidium and Giardia** are protozoan parasites that occur in all natural waters such as lakes, rivers and streams. They originate from animal waste in the watershed. The City of El Dorado facilities provide multiple barriers for removal of Cryptosporidium and Giardia including clarification, disinfection, filtration and the management of filtration procedures to ensure the lowest turbidity possible. Ingesting Cryptosporidium oocysts can cause an illness called Cryptosporidiosis. Symptoms of this illness include diarrhea, abdominal cramps, nausea, vomiting, fever and headache. For individuals with healthy immune systems, the symptoms usually disappear within a few weeks. However, for those individuals with weakened immune systems, the illness can become serious and life threatening. Current regulations require a treatment technique for Giardia removal and inactivation under the Surface Water Treatment Rule (SWTR). The City of El Dorado Water Treatment Plant strictly follows these guidelines.

**Fluoridation of Drinking Water** On January 7, 2011 the US Environmental Protection Agency (EPA) and the Health and Human Services Agency (HHS) recommended an adjustment in the recommended levels of fluoride in drinking water from previous optimum range of 0.7 mg/L to 1.2 mg/L to a set optimal level of 0.7 mg/L. The Kansas Department of Health and Environment also recommend the optimal level of 0.07 mg/L, as suggested by the EPA and HHS.

The adjustment reflects new research that suggests children receive fluoride from many sources (toothpaste, processed foods, etc.), so less fluoride in the water is necessary to achieve the oral health benefits. These new recommendations reflect the fact that optimally fluoridated water continues to be a safe and cost-effective community strategy to reduce dental disease. Evidence has indicated that communities that fluoridate their water have been able to reduce tooth decay in their citizens by 20-40%. The Kansas Department of Health and Environment continues to support community water fluoridation as a safe and effective public health measure to reduce dental disease among its citizens.

For more information about fluoride and its effect on oral health, please refer to [www.cdc.gov/fluoridation](http://www.cdc.gov/fluoridation).

# EL DORADO

THE FINE ART OF LIVING WELL



# 2020 ANNUAL DRINKING WATER QUALITY REPORT

See this report and other information about your water at:

**ELDOKS.COM**

## IMPORTANT INFORMATION ABOUT YOUR DRINKING WATER - Monitoring Requirements Not Met for City of El Dorado, Kansas

We are required to monitor your drinking water for specific contaminants on a regular basis. Results of regular monitoring are an indicator of whether our drinking water meets health standards. During January 2019 and July 2019 we did not monitor for Total Organic Carbon (TOC) as required by Kansas Administrative Regulations. Even though this is not an emergency, as our customers you have the right to know what happened and what we did to correct the situation.

**This is not an immediate risk and you do not need to use an alternative water supply.** If it had been, you would have been notified immediately. **Total Organic Carbon (TOC) has no health effects.** However, TOC provides a medium for the formation of disinfection byproducts. These byproducts include trihalomethanes and haloacetic acids. Drinking water containing these byproducts in excess of the MCL may lead to adverse health effects, liver or kidney problems, or nervous system effects, and may lead to an increased risk of getting cancer.

**El Dorado's water does not, and has not ever exceeded the maximum contaminant levels for trihalomethanes or haloacetic acids.**

**The City's drinking water is safe to drink and TOC has no health effects.** For more information, please contact Kurt Bookout at (316) 322-4411, or by mail at 220 E. First, El Dorado, KS 67042. Please share this information with all other people who drink this water, especially those who may not have received this notice directly (for example, people in apartments, nursing homes, schools, and businesses). You can do this by posting this notice in a public place or distributing copies by hand or mail.

*This notice is being sent to you by the City of El Dorado, Federal ID# KS2001511*