



THIS IS EL DORADO



WHAT'S HAPPENING IN EL DORADO

FIND MORE EVENTS AT WWW.ELDOKS.COM

- July 6- City Commission Meeting
- July 20 - City Commission Meeting
- August 3 - City Commission Meeting
- August 17 - City Commission Meeting

Check out one of the sites below for daily updates!



@eldokscvb



@visiteldoradoks



@whats.happening.in.eldoks



El Dorado, KS CVB



Follow your City Manager on Twitter: @EldoCityMgr

From the Desk of the City Manager

In April, the City Commission approved the City of El Dorado the authority to oversee the transition of operating the management of Prairie Trails Golf Course. The City Commission's ultimate goal is to market the property with the purpose of finding an interested party to purchase and operate Prairie Trails as a golf course. The City will obviously incur some expense during the initial transition and until a suitable buyer may be found. In the meantime, the City will seek to minimize the expense of managing Prairie Trails to reduce its impact on the operating budget. The General Fund did not budget to spend any money on Prairie Trails, so minimizing expenses will be essential to keeping finances reigned in for the year.

Prairie Trails was named for the native prairie grass in Kansas and the Emporia Wagon Trail that runs through the course on hole #4. This trail was the Stage Coach & Freight Trail between Emporia Kansas and Wichita Kansas in the 1870's. There is a plaque in the center of the fairway that briefly tells about the trail.

Prairie Trails began as a nine hole course in the 1920's called The El Dorado Country Club. In 1999 the back nine was constructed and opened in June 2000. The El Dorado Country Club was sold and became Prairie Trails Golf and Country Club on January 1st of 2001. In January of 2010 Prairie Trails Golf and Country Club was sold to the City of El Dorado, thus making it a public course and the 18 holes we have today. The official name is now Prairie Trails Golf Course.

Prairie Trails Golf course is 6340 yards from the back tees. The course contains Bluegrass & Zoysia grass tees, Bluegrass Fairways, & Creeping Bentgrass greens. Prairie Trails contains many acres of beautiful prairie grass and several water hazards.

New front 9 greens were constructed in fall of 2015 and spring of 2016 and then opened July 18, 2016. The new greens are larger and have more movement in them.

The City is in the process of continued improvements to the property so Prairie Trails can be sold in the near future. For any questions, please contact City Hall at 316-321-9100.

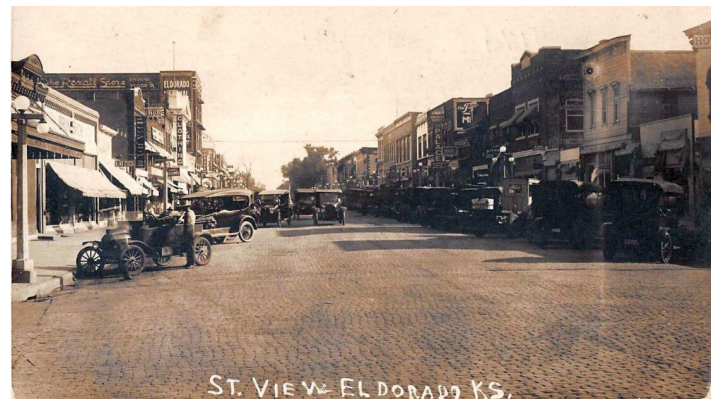


Countdown to 150th Celebration

The City of El Dorado will be celebrating 150 years of existence in 2021. If you are counting, El Dorado was incorporated in 1871. Time sure flies when you're having fun!

In light of preparing to celebrate our City next year, there will be a committee of volunteers and other stakeholders to coordinate and organize events to commemorate this special occasion. Once the committee is formed, there will be an opportunity for input from our citizens. This is an event that you will not want to miss!

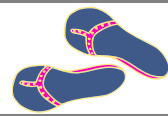
Going forward, we will be sharing historical stories and pictures about our amazing citizens and community. Stay tuned!



You can report a leak, missing signs, traffic signal out, trash missed and report a pothole all on the City website?

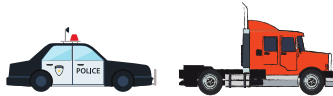
Check it out at:

<https://www.eldoks.com/requesttracker.aspx>



Truckers, Beware!

By: El Dorado Police Department



The City of El Dorado staff often get questions as to why so many semi-tractor trailers are stopped by the police department, particularly in the downtown area. There are designated Truck Routes in The El Dorado Municipal Code and there has been for many years. While there are a few reasons truck routes were established, the most important reason is most city streets were not designed for constant heavy truck traffic. Constant movement of these types of vehicles on a normal city street causes excessive deterioration to the roadway as well as the infrastructure underneath.

Limiting heavy truck traffic to local deliveries greatly reduces the number of these vehicles coming through areas not designed for that type of traffic and keeps the roadways from deteriorating prematurely. What this means is less tax dollars spent constantly repairing or replacing very costly streets.

The truck routes to include the Southwest Trafficway and the North truck route on Sixth Ave. were both designed and constructed to withstand heavy truck traffic.

El Dorado Police Officers are tasked with many duties to include traffic enforcement. Failure to follow designated truck route is just one of those tasks. Stopping large trucks particularly in the downtown area can be somewhat inconvenient for other travelers due to the size of these vehicles. The El Dorado Police Department also has an Officer who is a Certified Motor Carrier Inspector. One of his duties is to inspect commercial motor vehicles to promote safe operations and to insure state and federal laws are being followed.



I hope this answers some of the questions about our truck route. Have a safe and happy Summer! - Chief Curt Ziemann

Local Traffic Code Regulations:

- 10.08.010 - Truck routes.

The board of commissioners shall be authorized to designate and establish truck routes through the city for the use of transports and heavy vehicles as named hereafter. All such routes shall be marked by suitable signs by the city manager and/or director of public works and/or chief of police to advise the traveling public of existence of such truck route or routes. (Prior code § 15-201)

Local Traffic Code Regulations continued:

10.08.020 - Truck routes—Vehicles required to follow. From and after the designation and signing of any truck route as provided by Section 10.08.010 of this chapter, every transport, truck tractor, farm tractor, road tractor, trailer, mobile home, semitrailer and every truck of a licensed capacity in excess of twenty-four thousand (24,000) pounds of gross vehicle weight (GVW) shall use and follow such prescribed route or routes while in the city and shall not use any residential street or other street except those designated and marked as truck routes. When it may be necessary for any such vehicle to deliver or unload cargo or to load or receive cargo at any destination within the city and the same is not prohibited by ordinance, such vehicle may leave the truck route at the street intersection nearest to the place of the truck route by the most direct street to said truck route. Officers of police department of the city may direct the routing of all such vehicles. Provided further, that every truck tractor as defined under section 1 of the STO may travel to and from their established residence within the city. (Prior code § 15-202)

Flint Creek Estates

By: El Dorado Engineering Department

You may have seen construction on the south side of west 6th street recently. Currently there is a new housing development being built called Flint Creek Estates. The \$5.3 million residential

development will construct thirty-two single family residential units for moderate income families. The sub-division includes family

homes with an average size of 1300 square feet. Each home will have a two car garage.



The City incentivized the project with tax credits from the Kansas Housing Resources Corporation as a way to bring affordable housing to the community. The homes are expected to be complete in the second quarter of 2021. The units will be available to rent and interested individuals may contact MRE Capital. <http://www.mrecapital.com>.

